



MATERIAL HANDLING HOSE AND COUPLINGS

AZTEC

www.buchananrubber.com



AZTEC



APPLICATION: Primarily designed for handling abrasive slurries in mines and quarries. Can also be used for dry material handling of sand, gravel, grain, slag, and other such materials. External re-usable bolt on flanges allow for ease of installation, and uninterrupted free flow.

COVER: Thick black corrugated abrasion and weather resistant synthetic blend. Specially compounded to stand up to heavy abuse in mines and quarries.

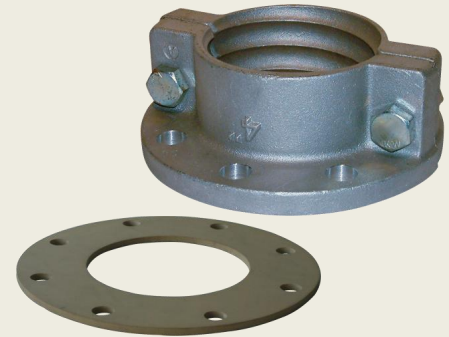
REINFORCEMENT: Multiple layers of high tensile synthetic cords enveloping an extra heavy duty wire helix.

TUBE: Ultra high quality blended rubber tube 3/8" thick red tube.

TEMPERATURE: -40C to +80C (-40F to +180F)

Item	ID	OD	Vacuum/HG	Bend Radius"	WP PSI	Std	Wght/#/ft
AZ-200	2	2.99	30	11.00	150	100'	3.50
AZ-300	3	4.49	30	14.00	150	100'	5.25
AZ-400	4	5.27	30	18.00	150	100'	5.40
AZ-500	5	6.45	30	24.00	150	100'	6.55
AZ-600	6	7.48	30	28.00	150	100'	10.38
AZ-800	8	9.53	30	48.00	150	60'	13.64
AZ-1000	10	11.49	30	60.00	150	40'	15.07
AZ-1200	12	13.74	30	90.00	150	20'	23.83

Part No.	Description
SFL-200-A	2"SPLIT FLANGE ALUM FOR AZTEC MATERIAL HANDLING HOSE
SFL-300-A	3"SPLIT FLANGE ALUM FOR AZTEC MATERIAL HANDLING HOSE
SFL-400-A	4"SPLIT FLANGE ALUM FOR AZTEC MATERIAL HANDLING HOSE
SFL-500-A	5"SPLIT FLANGE ALUM FOR AZTEC MATERIAL HANDLING HOSE
SFL-600-A	6"SPLIT FLANGE ALUM FOR AZTEC MATERIAL HANDLING HOSE
SFL-800-A	8"SPLIT FLANGE ALUM FOR AZTEC MATERIAL HANDLING HOSE
SFL-1000-A	10"SPLIT FLANGE ALUM FOR AZTEC MATERIAL HANDLING HOSE
SFL-1200-A	12"SPLIT FLANGE ALUM FOR AZTEC MATERIAL HANDLING HOSE
SFL-1400-A	14"SPLIT FLANGE ALUM FOR AZTEC MATERIAL HANDLING HOSE



www.buchananrubber.com

TORONTO - MONTREAL - EDMONTON - HOUSTON

50 Fasken
Dr,
Toronto, ON
M9W1K5

9555 Henri
Bourassa W,
St Laurent, QC
H4S1S7

9547-12Ave
SW,
Edmonton, AB
T6X0C3

5731 Harvey
Wilson Dr,
Houston, TX
77020